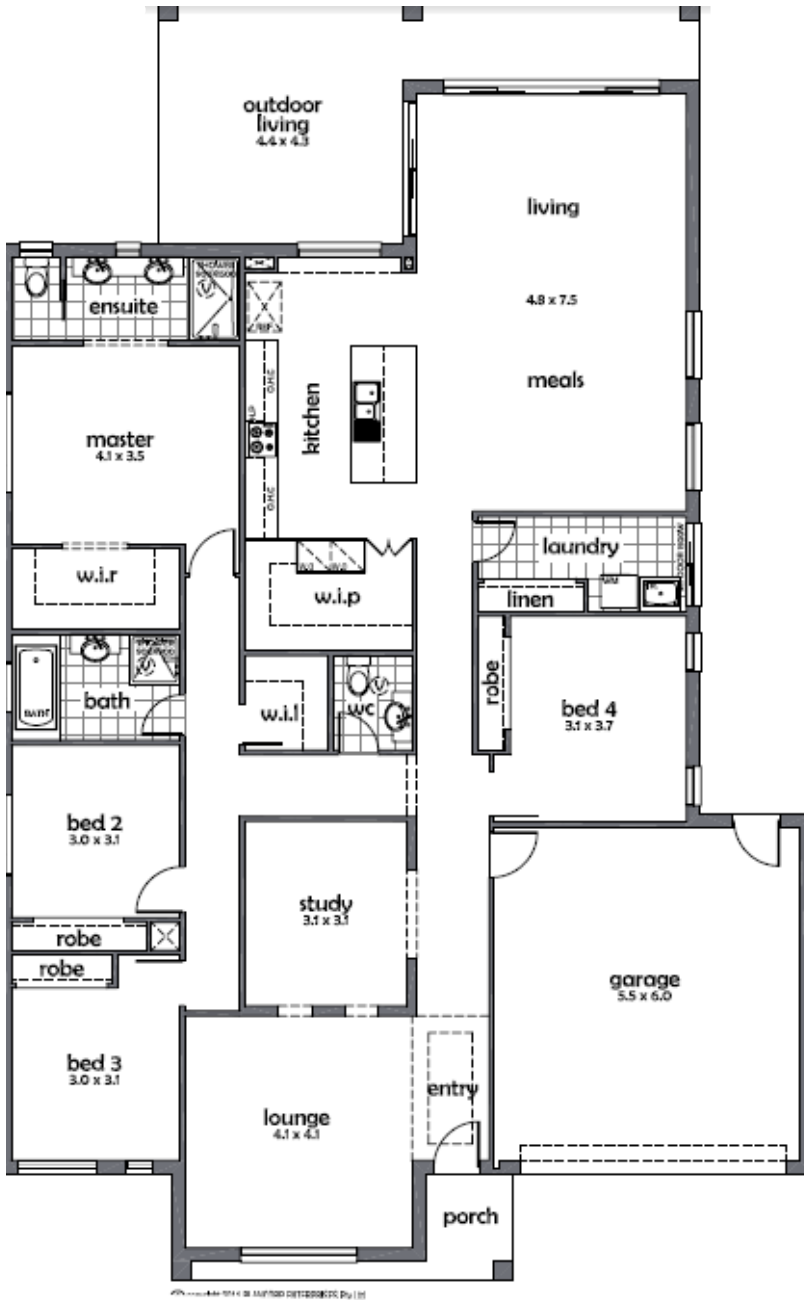








## Glancons 30



-  4 Bedroom
-  2 Bathroom
-  2 Living
-  2 Garage
-  1 Study
-  1 Alfresco

### Area Analysis

Living Area: 210.95sqm/22.71sqs

Garage Area: 36.29sqm/3.91sq

Porch Area: 4.65sqm/0.50sqs

Outdoor living: 26.86sqm/2.89sqs

Total Area: 278.75sqm/30.01sqs

### Dimensions:

Exterior Width: 14.67m  
Length: 22.01m

### Notes

\*Due to estate guidelines and council requirements, some lot width requirements will change. To be used as a guide only.

House size may also change depending on façade chosen.

Designed to suit a 16m wide